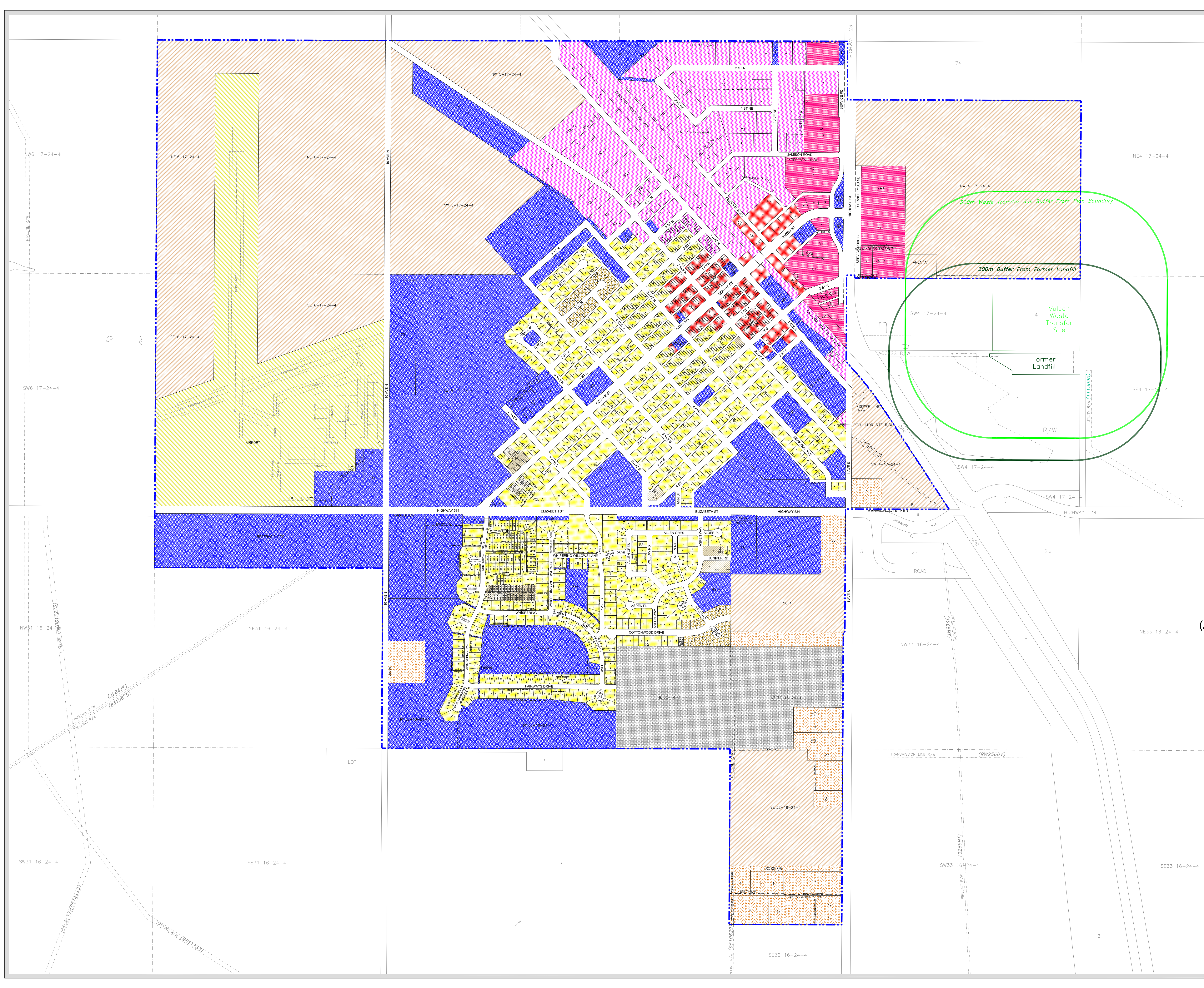


TOWN OF VULCAN  
NE 32, NW 32, SE 32, Ptn NE 31  
In Twp 16, Rge 24, W4M And  
SW 4, All 5, NE 6, Ptn NW4  
In Twp 17, Rge 24, W4M



LAND USE DISTRICTS MAP  
Land Use Bylaw No. 1437-15, April 27, 2015  
(Amended To And Including Bylaw No. 1470-18)

- Residential R-1
- Manufactured Home R-2
- Country Residential R-3
- Multi-Unit Residential R-4
- Retail / Commercial C-1
- Highway Commercial C-2
- Industrial I-1
- Transitional Agriculture TA
- Public P-1
- Direct Control DC
- Airport AP
- Town Boundary
- 300m Waste Transfer Site Buffer
- 300m Former Landfill Buffer